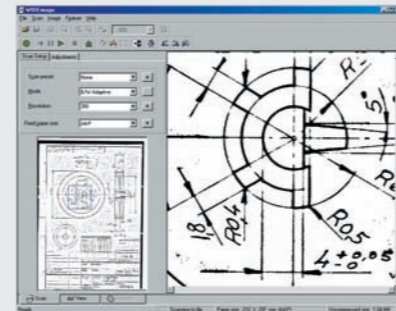


WIDEimage is composed of three screens, each equipped with tools specifically designed for professional scanning tasks:

Scanning

Scan and prescan interactively. The split screen with Overview and Detail windows lets you move around the image, and try out different settings while you zoom in and view the effects on-line.

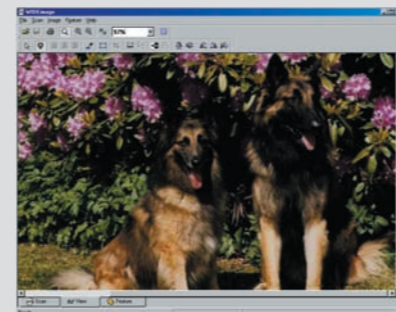
- Color modes - 24-bit true color, 8-bit indexed color, 8-bit classified color.
- Realistic 8-bit graytone (256 grayshade levels).
- Printed copies with B/W copy normal, B/W copy photo, B/W copy adaptive modes.
- Scan to file with B/W adaptive and B/W threshold modes.
- RGB tone transfer curves, adjustable black-and-white point.
- Brightness, contrast, tonal adjustment.
- Sharpen/soften/blur controls.
- Scan Window – Select a limited portion for scanning.
- Automatic alignment, rotation and inversion during scanning.
- Batch scanning and Conversion to many different image file formats.
- Direct scan to PDF with option for making image quality settings.
- Option for scanning to any scan client located on the internet or the local LAN.



Viewing

The WIDEimage ultra fast viewer offers all the tools you need for post scanning tasks. You can work with the image just scanned or load one you scanned previously. The viewer supports:

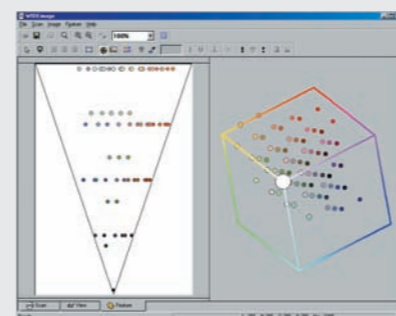
- Effective printing and conversion of scanned files.
- Sophisticated zooming tools.
- Brightness and contrast adjustment.
- Color manipulation and color to grayscale conversion.
- Color counting and decreasing the number of colors.
- Speckle removal, holefilling and color inversion.
- Cropping, alignment, rotation.
- Measuring of distances and angles.
- Batch conversion.



Feature Extraction

In the Feature screen you create and edit a color feature extraction filter. The filter can be downloaded to the scanner for color classified scanning of whole groups of similar maps or drawings. The Feature screen helps you through the following tools:

- Three ways to view image colors – Main image, Color Wheel and Histogram.
- Switch between LUT filter viewing and RGB true color viewing.
- Automatic creation of initial feature extraction (LUT) filter.
- Button tools for marking and protecting colors.
- Button tools for merging and removing colors.
- Button tools for inserting, importing and exploding colors.
- Edit, apply and undo buttons.



Contex publication 0005WI 2003 © Contex A/S. WIDEimage^{NET}, JETImage^{NET}, Contex, are trademarks of Contex A/S. We reserve the right to modify specifications without prior notice.



Contex Scanning Technology

2 Svanevang
DK-3450 Alleroed, **Denmark**
3200 Inland Empire Blvd., Suite 160
Ontario, CA 91764, **USA**
info@contex.com
www.contex.com

Tel: +45 48 14 11 22
Fax: +45 48 14 01 22
Tel: +1 (909) 466-4006
Fax: +1 (909) 466-4206

contex
SCANNING TECHNOLOGY

SCANNING

- Color & monochrome scanning
- Scan to file
- Scan to view
- Scan to print
- Scan to network, also across the internet



WIDEimage^{NET}

WIDE FORMAT SCANNING SOFTWARE

contex
SCANNING TECHNOLOGY

WIDEimage^{NET} scanning software is a fully integrated scanning, viewing, converting and printing system for Contex color and monochrome scanners. With its fast scan-to-disk capabilities, WIDEimage^{NET} is the perfect link between Contex scanners and popular software for graphics, reprographics, GIS, CAD, Desk Top Publishing and Drawing Archival.

Accurate Color Scanning

Wide-format color scanning requires high precision capture and full control over color tones. Through WIDEimage^{NET} you can set black-and-white points and determine RGB tone transfer curves (gamma) to be applied during scanning.

Scanner calibration ensures stability and predictability of color output. Through WIDEimage^{NET}, you can call up the Scanner Maintenance program to color calibrate your scanner in accordance with international color standards using the ANSI IT8 calibration target. After calibration, WIDEimage^{NET} lets you select scanning with NTSC or sRGB color spaces. With sRGB color space, your image data will be adjusted so they display correctly on your monitor and image files can be imported to RIP software without color deviations.

True color scanning produces a great many colors and in some cases, more colors than necessary to bring out significant details. WIDEimage^{NET} supports a Color Feature Extraction editor that enables you to produce uncomplicated, color-reduced scans on a whole class of maps or drawings with the extra advantage of noticeable reductions in end file sizes.

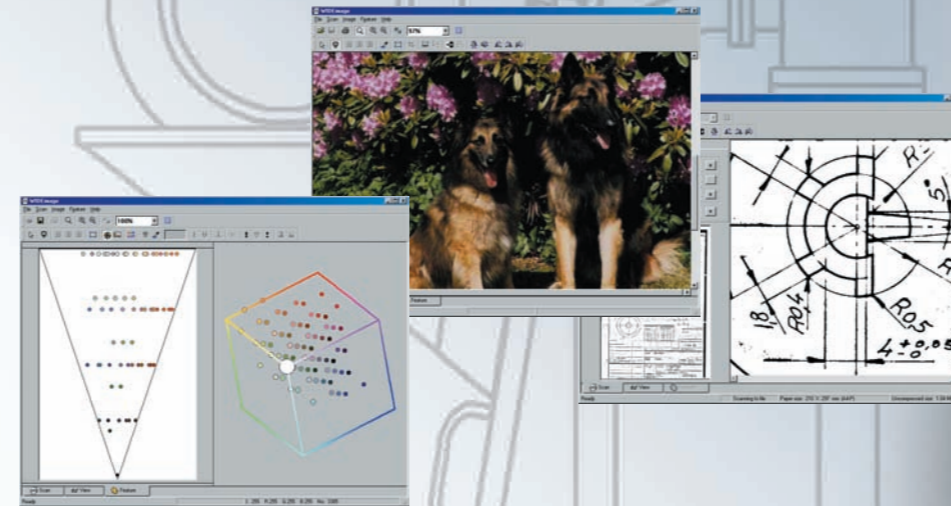
Powerful Image Capture

WIDEimage^{NET} enables you to control the Contex scanner's powerful image processing features including sharpen/soften and blur filters, Dual 2D-Adaptive enhancement with ADL+ error diffusion halftoning, 2D-Adaptive thresholding, 2D-Adaptive background suppression and 2D-Auto edge enhancement. The software comes with many useful standard scan presets that combine optimal image processing settings that are tested with different types of originals such as Light paper, Blueprint, Sepia, Gray transparency, Pencil and more.

Fast and Flexible Printing

Effective, fast and reliable large-format printing saves both time and money. WIDEimage^{NET} scanning software offers advanced printing options with full control over print output and formats. For speed, print processing is incorporated in the software and is fully compatible with common large-format printers.

Making high-quality black-and-white copies is easy with the special copy modes fitted to specific original types. Dual 2D-Adaptive enhancement and ADL+ error diffusion halftoning produce reli-



able monochrome copies of drawings and photos in which even subtle differences between shades of gray are maintained in the printed output.

Scan and then print from the file or select the scan-to-printer mode to speed up your job and leave it working on its own. Select any print output size, with either manually set scaling or auto-scaling, that automatically fits the output dimensions to the printing device.



Scanning Tools

WIDEimage^{NET} is a complete system containing professional imaging tools all in one interface so you don't have to transport your scanned file for basic image manipulation. Already while scanning, you can perform on-the-fly realignment of skewed drawings and rotate/mirror/invert the image in both color and black-and-white. All of these functions are also applicable to your image after scanning through WIDEimage^{NET}'s View Screen.

Wide-format scanning often involves whole sets of large documents, drawings and maps. To support this, WIDEimage^{NET} offers batch scanning, batch printing and batch file type conversion to enable you to process many documents at one go. Batch processing includes automatic file naming and detailed log file output.

Choose between many image-file formats for the scanned image including the popular PDF format with the option for making image quality settings.

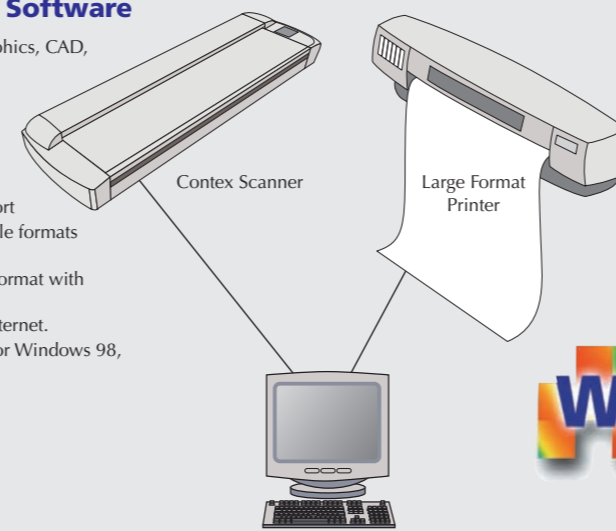
Contex has designed even better opportunities for companies to share one or more scanners across its departments no matter their locations. The Scan-to-network feature enables you to send scans directly to specific computers set up to receive the image data. This powerful feature lets you distribute and save images directly through your network and through the internet.

WIDEimage^{NET} is the ultimate wide format scanning station for professionals worldwide on Windows platforms.

WIDEimage^{NET} Scanning System

WIDEimage^{NET} Scanning Software

- Professional scanning for reprographics, CAD, GIS, DTP and archival.
- Full color and monochrome scanning support.
- Support of enhancement features including Dual 2D-Adaptive enhancement.
- sRGB and NTSC color space support
- Over 50 industry standard image file formats supported.
- Option for direct scan to PDF file format with option for quality setting.
- Scan to network, also across the internet.
- WIDEimage software is designed for Windows 98, 98SE, ME, NT4.0, 2000, ME, XP.



Before and after Dual 2D-Adaptive Enhancement

